



TECS 2700 is an electronic load limiter for hydraulic truck cranes. It can be configured in several ways, therefore it can be installed on a wide range of cranes with different carrying capacity.

It implements all the operations for stabilization control imposed by recent regulations. In particular, thanks to the management of the "working area", it permits the use of the crane at its maximum capacity even in situations which don't allow the complete stabilization of the machine on all sides.

It is classified under safety category 2 according to UNI EN 954-1 regulation.

TECS 2700

COD: TKS KT 006

Electronic
Load Limiter
by TEKNE
made in Italy



This document may not be considered as a contract specification.
Tekne reserves the right to modify the technical characteristics of this equipment without notice.



www.tekne.it
sales@tekne.it

TECS 2700

Electronic
Load Limiter
by TEKNE
made in Italy

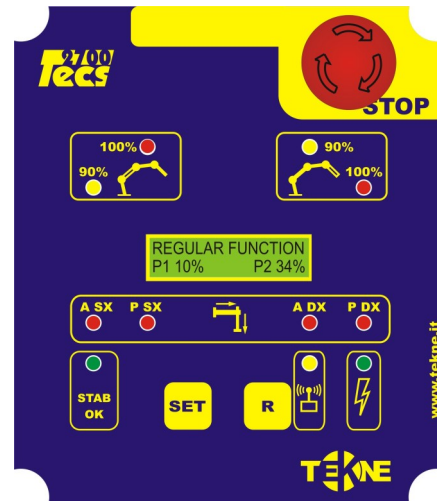
Working mode

The system processes the signals received by a series of transducers and microswitches installed on the machine and it properly drives – depending on working conditions – the actuation devices in order to safely move the crane.

The pressure of Primary and Jib (opt.) transducers is tracked in real time. Should the values be lower than their own block thresholds, the system activates the relief valve.

Block thresholds are dynamically calculated according to parameters that take into account both the stabilizing conditions (placement of crossbars) and the working area of the crane (front, side and rear position). In overload conditions the relief valve will be re-activated just in case of a movement which involves a lowering of load.

The “working area” function allows the crane to work advantageously in all those situations where it is not possible to place the stabilizers on all sides. Yet it guarantees the crane moving, even under full load, when the jib works on the correctly stabilized side.



Basic Dashboard

- “STOP” Emergency Button
- “R” Reset Button
- Alphanumeric LCD display 16x2
- Led signalling 90%.100% of the maximum crane and jib load.
- Crossbars’ stability and placement led signal

Technical Data

Supply	10/30 V
Min Current	400 mA
Max Current	14 A
Max Current on single output	3 A
Temperature Range	-20 + 70°C
Dimensions	210x190x130mm

Analogic Input (x2)

- primary pressure transducer
- Analogic Calibration

Digital Input (x25)

- placement of stabilizers
- movement of stabilizers
- crane locked
- reset, manual/radio

- centralized movements (radio DV),
- lowering of the primary
- back extensions

Digital Output (x7)

- Emergency solenoid valve
- 90% light column
- 100% light column



TECS 2700

Electronic
Load Limiter
by TEKNE
made in Italy

Security checks

Both at power-on and during normal operation, TECS 2700 performs a series of tests on the status of inputs, transducers and outputs.

Faults are shown by means of a fault error message on the display.

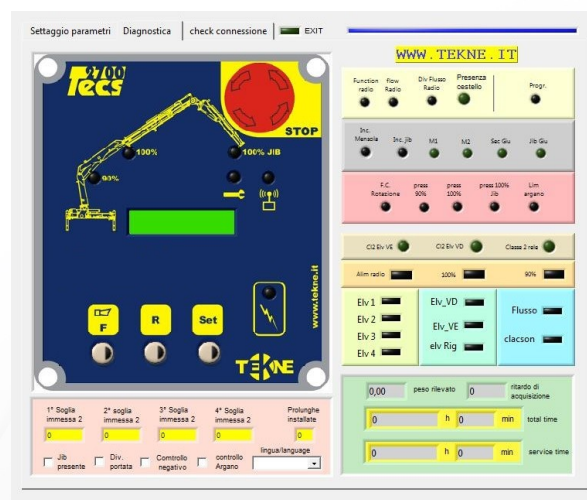
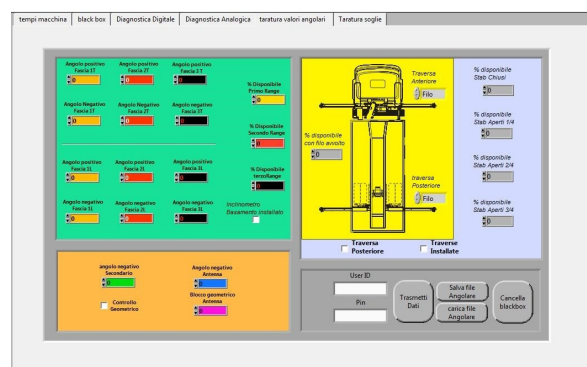
In the event of a fault, the relief valve will be switched off until the error condition is resolved. Particular attention is reserved to the verification of the electric circuit that drives the relief valve. Should the valve be mistakenly powered in permitted locking condition, the central unit immediately interrupts the supply voltage of the circuit opening the relief valve.

Programming - Diagnostics

The setting up of the calibration parameters of the crane (Block threshold, hysteresis interval, angular settings, Service parameters, etc..) is possible by connecting the control unit through an appropriate interface (serial or USB) to a PC using the after installing the appropriate calibration software. It is possible to use a database of all the setting parameters of a wide range of machines: the setting occurs just by clicking on the "Send data" button. The calibration SW makes calibration operations faster and safer; moreover it is a powerful and rapid system diagnosis tool, through which you can check the functionality of the control unit and the sensors connected to it.

Optionals

- Time Service/Rent management
- Blackbox with calibration history log
- Setting parameters accessible through 2 pwd levels



This document may not be considered as a contract specification. Tekne reserves the right to modify the technical characteristics of this equipment without notice.



TEKNE srl
HeadQuarters
Contrada San Matteo, 42
66030 Poggiofiorito (CH)
ITALY
E-mail: sales@tekne.it

Operational Unit - Ortona
Strada Statale 538, 30
66026 Ortona (CH)
ITALY
Tel.: +39 0871 938820

All rights reserved ©Tekne srl 2018



TECS 2700

Electronic
Load Limiter
by TEKNE
made in Italy

KIT TKS KT 006

1	Control Unit TECS 2700	Q.ty 1
2	Cabling TECS 2700	Q.ty 1
3	Male connector	Q.ty 1

Accessories

1	Pressure Transducer 400 bar	Q.ty 1	
2	Pressure Transducer cable 400 bar	Q.ty 1	
3	Limit switch (many types) NO+NC wired or connector provided	Q.ty tbd	Qty and type dependent on specific installation
4	USB programming interface	Q.ty 1	
5	Led resin light column (with buzzer)	Q.ty 1	
6	Calibration SW for TECS 2700	Q.ty 1	

This document may not be considered as a contract specification.
Tekne reserves the right to modify the technical characteristics of this equipment without notice.

