



End-to-end capabilities: R&D, design, system integration, prototyping, and full-scale production.  
Laboratory and field testing, qualification, lifecycle support: all ensure excellence from start to finish.

From initial concept to mission-ready reality: we are the strategic partner you need.



Emergency  
and Rescue



Defense  
and Security



Mining  
and Construction



Oil & Gas



Tourism



Public Service



[www.tekne.it](http://www.tekne.it)

TEKNE SPA  
[www.tekne.it](http://www.tekne.it) - [sales@tekne.it](mailto:sales@tekne.it)  
Phone: +39 0871 938820



READY FOR  
EMERGENCY  
AND RESCUE

M&CBRO001-010ENEd01



# EMPOWERING YOUR MISSION TO HELP OTHERS

In scenarios where rapid response is crucial, we provide **mobile and fixed solutions for emergency management**. From logistics to field operations, we support the coordination and command of **complex rescue environments**.

## BY YOUR SIDE, EVERY STEP OF THE WAY

Our team's expertise ensures **comprehensive support for your vehicle or system throughout its entire lifecycle**. Our commitment continues beyond the design and production stages, extending post-delivery through a widespread network of authorized service centers and qualified international partners.

## WHAT WE OFFER

- Multi-purpose vehicles
- Service and logistics vehicles
- Firefighting vehicles
- Rescue vehicles & Ambulances
- Roadside assistance & Recovery vehicles
- Material transport and trailers
- Specialized off-road & All-terrain solutions
- Passenger transport & Personnel carriers
- Protected and armored vehicles
- Specialty vehicles (*divers, K-9 units, telecommunications, mountain rescue etc.*)
- Mobile units: Offices, labs, and workshops
- Command and Control centers & Operations rooms
- Tactical Shelters (*CBRN labs, guard posts, environmental control*)
- Critical Infrastructure Protection systems (*CBRN, LACS*)
- Situation awareness (*indoor and outdoor localization*)
- V/UHF radio systems, specific solutions up to 38 GHz
- Integrated emergency management systems
- Custom systems and conversions on request

Discover the full range of TEKNE products and solutions for the EMERGENCY MARKET on our website.





## ONE FOR ALL, ALL FOR ONE GRAELION 4X4 BY TEKNE

A versatile, mid-range vehicle engineered for the most demanding **harsh and off-road environments**. It is the ultimate choice for emergency response, firefighting, and civil protection missions.

We engineered the entire platform from the ground up: axles, transfer cases, multi-configuration chassis, and specialized cabins are all developed and manufactured in-house. This deep technical expertise allows us to deliver **bespoke solutions** tailored to our customers' specific operational requirements.

Already selected by **Civil Protection, the Red Cross, Forestry Corps, Firefighters**, and many other public and private organizations in Italy and abroad, GRAELION has been deployed in firefighting, wildfire response, ambulance, mobile office, command & control, evacuation transport configurations and more.

### GRAELION IN BRIEF

- ▶ Chassis and drivetrain built for heavy-duty use
- ▶ Single or double cabin in crush-resistant stainless steel (*internal rollbar*)
- ▶ GVW from 7.5 to 9.5 tons
- ▶ High-clearance Portal Axles



With a wide array of configurations and the ability to develop custom-engineered variants, Graelion is the definitive solution for complex, multi-mission requirements.

## 4 STEERING WHEELS TALUS BY TEKNE

Our expertise in vehicle conversions led us to develop a **compact, rugged, and highly maneuverable platform.**

The **new axle system allows the rear wheels to steer up to 16.5°**, dramatically reducing the turning radius to just 7.5 meters in counter-phase steering mode, where rear wheel movement opposes the front wheels.

Crab steering mode, with synchronized front and rear wheel steering, is essential for operating on slopes and in confined spaces.

TALUS features permanent 4x4 all-wheel drive, making it particularly effective in rough terrain and off-road environments.

### TALUS IN BRIEF

- ▶ Gross Vehicle Weight (GVW): 18 to 20 tons
- ▶ Interchangeable equipment system
- ▶ Tool mounting plate
- ▶ Truck, operating machine, and agricultural tractor configurations

Developed for **Civil Protection** operations, including wildfire firefighting (A/B) configurations.



# TALUS

TEKNE also developed the **Steering Axle Control Unit** and the **Graphic User Interface (GUI)** used to select the steering modes.

# FIREFIGHTING

For firefighting and wildland firefighting operations, we offer a wide range of vehicles designed for every operational requirement - from agile urban-response vehicles to heavy-duty configurations for forest environments.

GRAELION is a leading platform in the sector, selected by the Italian Fire Brigade in multi-rescue configuration and by the Slovenian Fire Brigade in wildfire response configuration.



## WILDLAND FIREFIGHTING MODULES

Our custom-designed mobile modules are engineered to integrate seamlessly with the vehicle, enabling rapid response in emergency scenarios, including wildfire suppression and operations in rural areas. These complete outfitting solutions equip the vehicle with high-performance motor pumps, stainless steel tanks, swivel hose reels, high- and medium-pressure nozzles, lighting systems, winches, and more.

We design firefighting and wildland firefighting configurations for **vehicles of every brand and model** - from the versatility and agility of pickup trucks to heavy-duty trucks equipped with tanks of up to 20,000 liters. Each vehicle is custom-configured with high-performance pumps, ergonomic equipment compartments, and ultra-durable materials to ensure maximum operational effectiveness.

**We develop advanced solutions tailored to customer requirements, transforming every vehicle into a fully autonomous operational unit ready for any emergency scenario.**



# MOBILE COMMAND CENTERS, LABORATORIES & OFFICES

A tailor-made, fully customized project designed around its specific operational use, focusing on **space optimization, comfort, and functionality**. It builds on our multidisciplinary expertise in the automotive and electronics sectors.

Desks, overhead storage units, drawer systems, compartments, and seating are all designed and manufactured to specification. The solution also allows for the integration of high-value, advanced technological systems. **Onboard electronics** transform the vehicle into a fully functional office environment, featuring personal computers, printers, monitors, and both wired and wireless networks - including satellite connectivity - or into a fully equipped mobile laboratory with complex equipment such as those used in the **telecommunications (TLC) or CBRN** sectors.

We also design and build **operational control rooms for integrated emergency management**, combining mobile office setups with interoperable telecommunications systems for **Command and Control functions**.



## WHY CHOOSE US?

Because we combine the expertise and experience of a vehicle outfitter with that of a system integrator.

# VEHICLES FOR GOODS TRANSPORT AND EQUIPMENT

Vehicles, trailers, and shelters designed for the **transport of emergency equipment**, featuring internal layouts specifically engineered to accommodate cargo. They are built on chassis made of **robust steel profiles**.

## LOGISTIC SUPPORT VEHICLES

A large fleet of **camper-style logistical support vehicles** has been designed and manufactured for the Italian Fire and Rescue Service. These vehicles are **ready for deployment nationwide** in the event of major emergencies such as earthquakes, floods, and natural disasters, ensuring full self-sufficiency for personnel thanks to onboard sleeping areas, showers, bathrooms, and heating systems.

We also offer a full range of **buses and minibuses**, including electric versions, for team transport in the field or civilian evacuation operations, such as our GRAELION model developed for the Italian Red Cross (CRI).



## AMBULANCES AND MEDICAL VEHICLES

**Ambulances** - ambulance conversions compliant with EN1789 standards, Types A, B, and C.

**Mobile Clinics** - mobile healthcare units designed and built according to the specific technical and logistical requirements of the client.

**Blood Collection Units** - mobile donation centers developed and installed on semi-trailers, buses, or other vehicle platforms.

**MEDEVAC** - mobile medical evacuation platforms designed for the transport of wounded personnel from the battlefield.

# LIGHT VEHICLE OUTFITTING

A wide range of vehicles (*cars, vans, trucks, etc.*) outfitted according to the specific requirements of the client and our extensive experience. We design and manufacture specialty vehicles for diving units, K9 (*canine*) units, EOD (*explosive ordnance disposal*) teams, telecommunications units, mountain rescue services, engineering corps, and more.

From spatial layout design to material selection, we develop modular solutions that optimize workflow, turning each vehicle into a highly effective logistical asset for any mission.



## SPECIAL-PURPOSE VEHICLES

Vehicles designed and manufactured for highly complex applications where non-standard solutions and dedicated expertise are required.

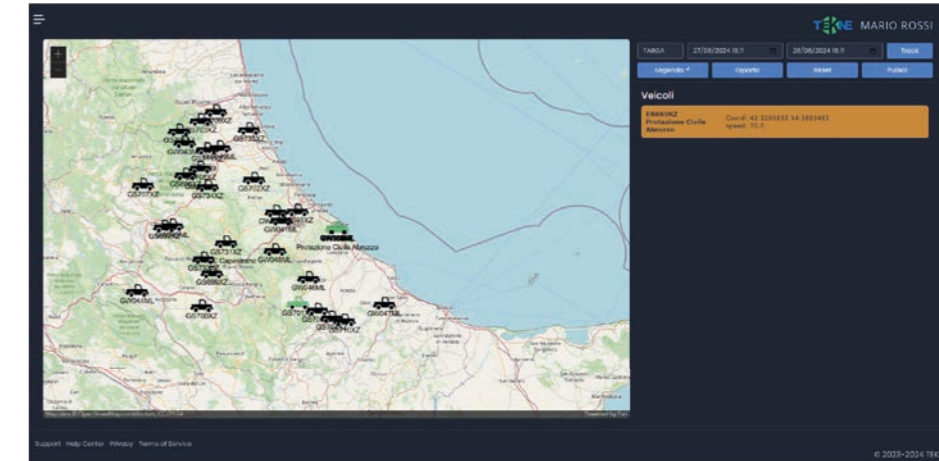
Our key developments include **ATERNUS**, our 100% electric minibus, available in ambulance and evacuation configurations, featuring ATEX certification for explosive environments, and **GRAELION**, in bimodal versions for both road and rail operations.



# FLEETS

Over the years, we have delivered fleets for agencies and organizations engaged in emergency & rescue operations, developed according to specific operational requirements and deployed on a large scale.

Key projects include GRAELION and TALUS Wildland Firefighting (WFF) fleets for the Lazio Region Civil Protection, as well as WFF pickup trucks for Calabria, Abruzzo, Sicily, and Rome Capital. We have also supplied GRAELION vehicles for the Italian National Fire and Rescue Service in AF/Combi configurations (multi-purpose rescue), with upcoming WFF and AF/UCL (Local Crise Unit) versions (mobile command posts). Additional deliveries include recovery trucks and lightweight outfitting for CBRN units, K9 units, and cave diving teams for the Italian National Fire and Rescue Service, as well as Command Posts for the Italian Red Cross, designed for national-level command and coordination functions.



## FLEET MANAGEMENT

TEKNE has developed **DeOC (Device Operation Center)**, a hardware/software solution designed to optimize vehicle fleet management.

Through a user-friendly and functional interface, it simplifies the **localization, monitoring, and control** of all key data (fuel management, maintenance and payment schedules, logbook, etc.) for each vehicle. All information is managed **in real time** within a single integrated platform, improving operational efficiency and reducing overall costs.





## TEKNE ABOUT US

Experts in **special vehicles and electronic systems**, proudly Italian designers and manufacturers!

Drawing on cross-functional expertise gained over more than 35 years in both the international markets, we operate across the full value chain: **design, production, outfitting, sales, and after-sales service** of vehicles (*industrial, special-purpose, military, and passenger transport*), as well as related components and spare parts, and electronic systems and services for the automotive, defense, and security sectors in both military and civilian applications.



TEKNE is an Italian company in continuous growth, with six sites located in Abruzzo and Emilia-Romagna.

In addition to a direct workforce of more than 200 engineers, designers, technicians, and highly skilled operators, we rely on a trusted network of partners, suppliers, and collaborators, many of them locally based, who carry out outsourced production activities under our supervision and quality control.

Our corporate know-how spans multiple fields and industries, including electronics, mechanics, automotive, and telecommunications, serving both military and civilian sectors.



The high level of expertise of our technical staff, combined with continuous research and development of new and improved solutions, represents one of our core strengths. This enables us to act as a qualified supplier of vehicles and systems for the National Armed Forces, NATO, and the United Nations.

In Italy we have secured major contracts with key institutional clients, including the Ministry of Defence (*Italian Army, Air Force, Carabinieri*), the Ministry of the Interior (*Italian National Fire and Rescue Service, State Police*), the Ministry of Justice (*Penitentiary Police*), the Presidency of the Council of Ministers, the Italian Red Cross, Civil Protection, and many others.